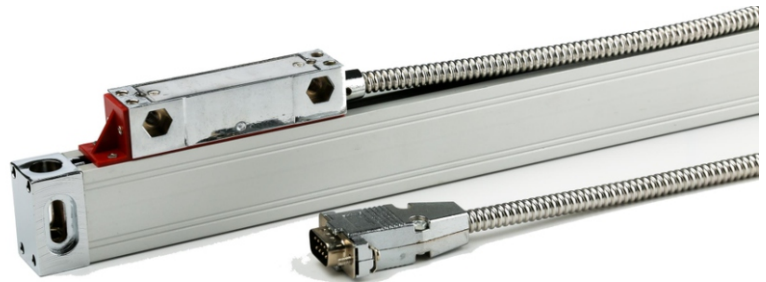


# DLS-B series



## General Characteristics:

Resolutions up to 0.5um  
 Cross Size 30 x 66.6 mm<sup>2</sup>  
 Max Measure Length: 3000mm



## Mechanical and Electrical Features

Grating Pitch	20um		<table border="1"> <thead> <tr> <th>pin</th> <th>PP signal</th> <th>EIA422 signal</th> </tr> </thead> <tbody> <tr> <td>1</td> <td>—</td> <td><math>\bar{A}</math></td> </tr> <tr> <td>2</td> <td>OV</td> <td>OV</td> </tr> <tr> <td>3</td> <td>—</td> <td><math>\bar{B}</math></td> </tr> <tr> <td>4</td> <td>GND</td> <td>GND</td> </tr> <tr> <td>5</td> <td>—</td> <td><math>\bar{R}</math></td> </tr> <tr> <td>6</td> <td>A</td> <td>A</td> </tr> <tr> <td>7</td> <td>5V</td> <td>5V</td> </tr> <tr> <td>8</td> <td>B</td> <td>B</td> </tr> <tr> <td>9</td> <td>R</td> <td>R</td> </tr> </tbody> </table>	pin	PP signal	EIA422 signal	1	—	$\bar{A}$	2	OV	OV	3	—	$\bar{B}$	4	GND	GND	5	—	$\bar{R}$	6	A	A	7	5V	5V	8	B	B	9	R	R
pin	PP signal			EIA422 signal																													
1	—			$\bar{A}$																													
2	OV			OV																													
3	—			$\bar{B}$																													
4	GND			GND																													
5	—			$\bar{R}$																													
6	A			A																													
7	5V			5V																													
8	B			B																													
9	R			R																													
Thermal Expansion	$10.6 \times 10^{-6}$																																
Resolution	0.5 - 1 - 5 um																																
Repeatability	$\pm 1$ increment																																
Max Speed m/min	60(5um); 20(1um)																																
Output type	TTL / EIA422A																																
Max. Acceleration	20 m/S <sup>2</sup>																																
Protection	IP54																																
Power supply	60mA Max.																																
Phase displacement	$90^\circ \pm 5^\circ$ electrical																																
Operating temperature	$0^\circ - 50^\circ$																																
Storage temperature	$-20^\circ - 80^\circ$																																
Humidity	100% not condensed																																

## Interface Circuit and output signals

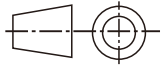
INTERFACE CIRCUIT		OUTPUT SIGNALS	
<b>TTL</b>	<p style="text-align: right; font-size: small;">R1=68 C1=1000pF R2=100 C2=1000pF R3=10K</p>		
<b>EIA422A</b>	<p style="text-align: right; font-size: small;">R1=120 R2=R3=5K</p>		

# DLS-B series



## Dimensions and Mounting Tolerances

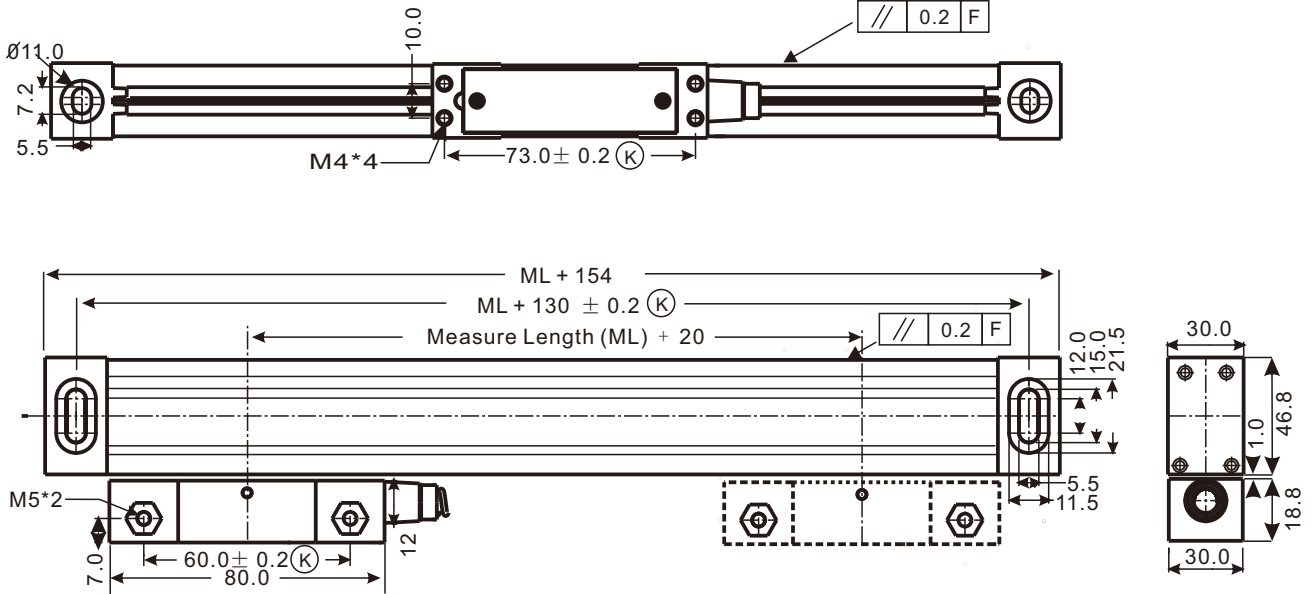
Unit: mm



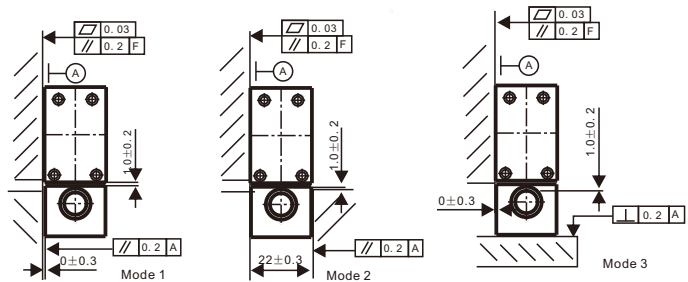
Tolerancing ISO8015  
ISO 2768 -mH  
< 6 mm ±0.2mm

Delos Linear Scale

# DLS-B



Measure Length: (mm)  
1300, 1400, 1500, 1600, 1700,  
1800, 1900, 2000, 2100, 2200,  
2300, 2400, 2500, 2600, 2700,  
2800, 2900, 3000 (Max ML)



Note: F = Machine guideway;  
(K) = Required mating dimensions

## Ordering Code

TYPE	RESOLUTION	MEASURE LENGTH	CABLE LENGTH	VOLTAGE	OUTPUT MODE	MARK POINT	OEM LOGO
DLS-B	5R	xxxx	Cxx	Vxx		Mxx	
DLS-B	5R = 5um 1R = 1um	1000 = 1 meter	C35 = 3.5meter	V05 = 5 V V24 = 24V	TTL EIA422	M0 = Center Point M1 = Left Point M2 = Right Point M3 = 50mm point	

**Example: DLS-B5R1300**



Delos Encoder Co.,Ltd

WWW.delos-encoder.com sales@delos-encoder.com Tel: 86-755 8976 9252

Addr: Rm607 No. 10th Building center hongmian 1 Rd, Henggang Town, Longgang Area, ShenZhen, Guangdong CHINA 518000